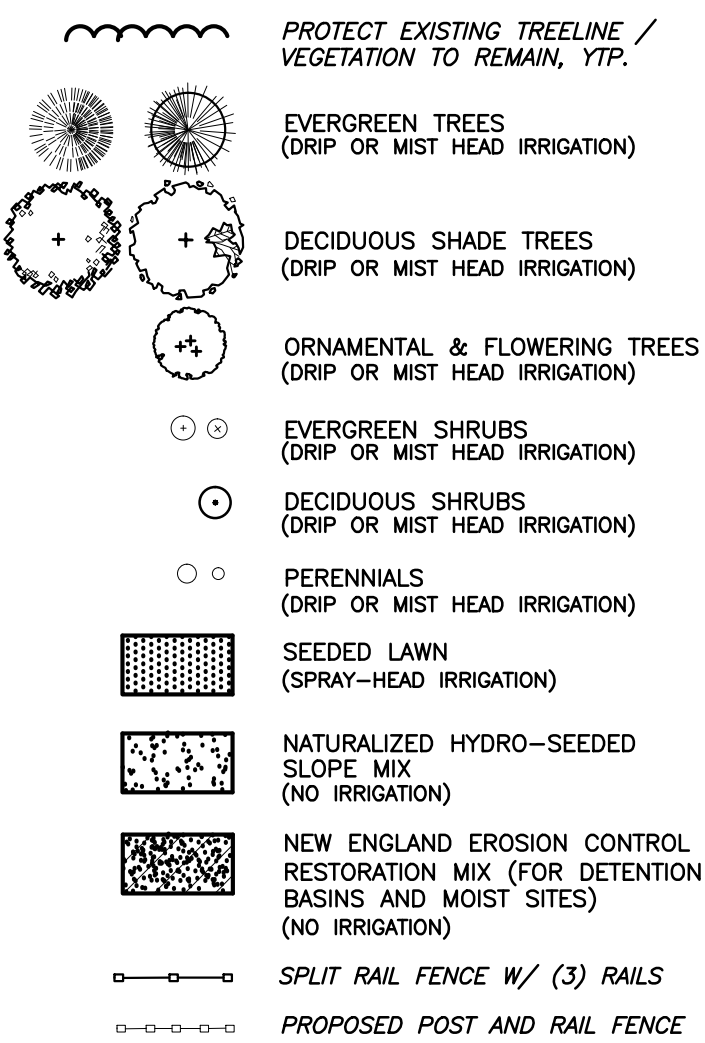


GENERAL NOTES:

- CONTRACTOR SHALL MAKE A SITE VISIT PRIOR TO BIDDING TO EXAMINE EXISTING CONDITIONS FOR THEMSELVES. CONTRACTOR TO FAMILIARIZE THEMSELVES W/ DESIGN DOCUMENTS NOTES & DETAILS AND THE MASSACHUSETTS DEPARTMENT OF PUBLIC WORKS STANDARD SPECIFICATIONS FOR HIGHWAYS AND BRIDGES, CURRENT EDITION.
- CONTRACTOR SHALL NOTIFY / COORDINATE WITH THE TOWN OF GROTON, PRIOR TO PLANT MATERIAL INSTALLATION.
- CONTRACTOR SHALL COORDINATE WITH THE TOWN OF GROTON.
- PRIOR TO THE PRE-CONSTRUCTION MEETING THE CONTRACTOR SHALL CONTACT DIG SAFE ☎ 1-888-344-7233 TO HAVE THE EXISTING UTILITIES MARKED.
- All contractors shall inspect site prior to bidding to verify existing conditions for themselves.
- The Contractor shall supply all plant material in quantities sufficient to complete the planting shown on the drawings. See specification.
- All plant material shall conform to the guidelines established by "The American Standard for Nursery Stock", published by the American Association of Nurserymen, Inc. ANSI Z60.1-Current Edition.
- All plants to be balled in burlap or container grown. No plastic burlap.
- All plants to be approved by the Landscape Architect.
- Stake location of all proposed plant material for approval of Landscape Architect prior to commencement of planting.
- The landscape contractor shall guarantee all plant materials for one (1) full year from date of acceptance.
- Heal all construction scars with naturalized grass, lawn or mulch as indicated by drawings and/ or as directed by Landscape Architect.
- "Dry Roots" shall be added to all new tree planting pits. All new loam shall be tested and amended as stated in the loam report. Provided by loam supplier.
- Landscape Contractor shall submit a watering schedule program for the (60) day maintenance period for review by the Landscape Architect & to Owner for all proposed plant material.
- Protect existing plant material within construction limits. Provide watering program for all proposed plant material during construction.
- Substitutions allowable per seasonal needs.

FOR LANDSCAPE DETAILS
SEE SHEET L2

GRAPHIC LEGEND



LANDSCAPE NOTES:

LAWN GRASS
(PACIFIC NORTHWEST SEED, LTD. WILMINGTON, MA.)
LANDSCAPE/UTILITY MIXTURE FOR SUN/SHADE:
40% ENCHANTED PERENNIAL RYEGRASS
40% CREEPING RED FESCUE
20% GOLDRUSH KENTUCKY BLUEGRASS

NATURALIZED GRASS SEED			
(PACIFIC NORTHWEST SEED, LTD. WILMINGTON, MA.)			
NATURALIZED GRASS SEED:			
	PROPORTION	MINIMUM	MINIMUM
	BY WEIGHT LBS	PURITY %	GERMINATION %
CREEPING RED FESCUE	50	85	95
KENTUCKY 31	30	85	95
DOMESTIC RYE	10	90	98
RED TOP	5	85	92
LADINO CLOVER	5	85	96

N.E. EROSION CONTROL / RESTORATION GRASS (NEECR)
(NEW ENGLAND WETLAND PLANTS, INC. AMHERST, MA.)
NEW ENGLAND EROSION CONTROL / RESTORATION MIX (FOR DETENTION BASINS & MOIST SITES):
UPLAND BENTGRASS, CREEPING BENTGRASS, BIG BLUESTEM, FOX SEDGE, CANADA WILD RYE, VIRGINIA WILD RYE, CREEPING RED FESCUE, SOFT RUSH, SWITCHGRASS, LITTLE BLUESTEM, GREEN BULRUSH, NEW ENGLAND ASTER, SPOTTED JOE-PYE WEED, BLUEVERVAIN.

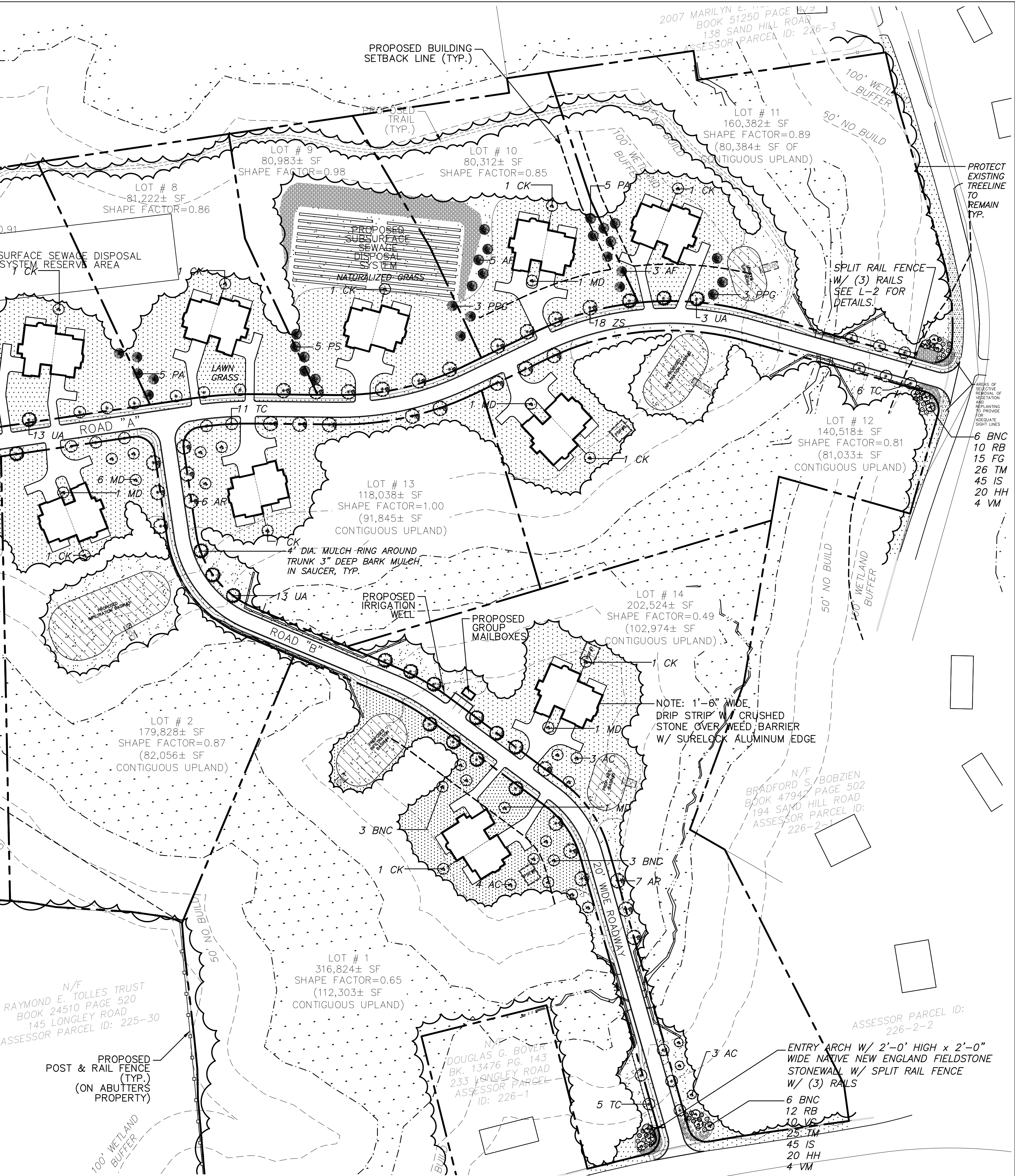
PLANT MATERIAL LIST - THE VILLAGE AT SHEPLEY HILL, GROTON, MA.						
SYM.	QTY.	BOTANICAL NAME	COMMON NAME	SIZE	ROOT	REMARKS
EVERGREEN TREES						
AF	8	ABIES FRASERI	FRASER FIR	8'-10'	B&B	NATURAL SHAPE, UNSHEARED
PS	5	PINUS STROBUS	EASTERN WHITE PINE	8'-10'	B&B	NATURAL SHAPE, UNSHEARED
PA	10	PICEA ABIES	NORWAY SPRUCE	8'-10'	B&B	NATURAL SHAPE, UNSHEARED
PPG	6	PICEA PUNGENS 'GLAUCA'	COLORADO BLUE SPRUCE	8'-10'	B&B	NATURAL SHAPE, UNSHEARED
TCC	5	TSUGA CANADENSIS	CANADIAN HEMLOCK	8'-10'	B&B	NATURAL SHAPE, UNSHEARED
DECIDUOUS AND ORNAMENTAL TREES						
AC	10	AMELANCHIER CANADENSIS	SHADBLOW SERVICEBERRY	7'-8'	B&B	MULTI-STEM TIGHT CLUMP
AR	14	ACER RUBRUM	RED MAPLE	2 1/2'-3'	B&B	6" HIGH BRANCHING
BNC	24	BETULA N. 'HERITAGE'	HERITAGE RIVER BIRCH	8'-10'	B&B	(3) STEM TIGHT CLUMP SPECIMEN
CK	13	CORNUS KOUSA	KOUSA DOGWOOD	7'-8'	B&B	SINGLE-STEM SPECIMEN
MD	20	MALUS 'DONALD WYMAN'	DONALD WYMAN CRABAPPLE	7'-8'	B&B	SINGLE-STEM SPECIMEN
UA	29	ULMUS AMERICANA 'VALLEY FORGE'	VALLEY FORGE AMERICAN ELM	2 1/2'-3'	B&B	6" HIGH BRANCHING
TC	22	TILIA CORDATA 'GREENSPIRE'	GREENSPIRE LITTLELEAF LINDEN	2 1/2'-3'	B&B	6" HIGH BRANCHING
ZS	27	ZELKOVA SERRATA 'VILLAGE GREEN'	VILLAGE GREEN ZELKOVA	2 1/2'-3'	B&B	6" HIGH BRANCHING
SHRUBS						
FG	15	FOTHERGILLIA GARDENI	DWARF FOTHERGILLIA	2'-2 1/2'	B&B	
RB	22	RHOODODENDRON 'BOULE DE NEIGE'	BOULE DE NEIGE RHOODODENDRON	2'-2 1/2'	B&B	
TM	51	TAXUS M. 'DENSIFORMIS'	DENSE SPREADING YEW	2'-2 1/2'	B&B	
VC	10	VIBURNUM CARLESI	KOREANSPICE VIBURNUM	2'-2 1/2'	B&B	
RS	60	RHOODODENDRON 'SCINTILLATION'	SCINTILLATION RHOODODENDRON	2'-2 1/2'	B&B	
PF	9	PIERIS FLORIBUNDA	MOUNTAIN ANDROMEDA	2'-2 1/2'	B&B	
PJ	9	PIERIS J. 'MOUNTAIN FIRE'	MOUNTAIN FIRE ANDROMEDA	2'-2 1/2'	B&B	
PERENNIALS, GROUNDCOVER AND GRASSES						
HH	40	HEMEROCALLIS 'HAPPY RETURNS'	HAPPY RETURNS DAYLILIES	1 GAL	GAL	YELLOW
IS	90	IRIS SIBERICA 'CAESAR'S BROTHER'	CAESAR'S BROTHERS IRIS	1 GAL	GAL	PURPLE
VM	12	VINCA MINOR	MYRTLE	#2	POT	(50) INDIVIDUAL PLANTS PER FLAT

GENERAL IRRIGATION NOTES:

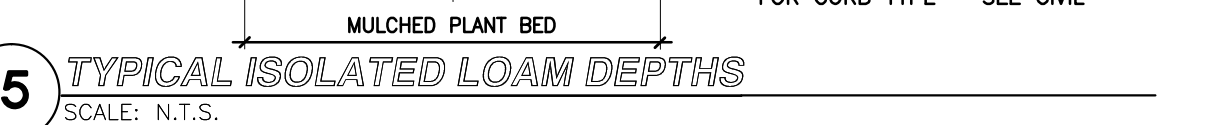
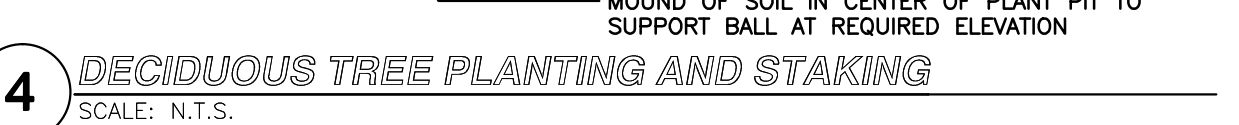
- The design/build irrigation sub-contractor shall provide a complete system for the irrigation area shown on the plan, which includes new and existing transplanted plant materials. Shop drawings shall be provided at a suitable scale to illustrate that the designated plant materials will be irrigated by either spray heads, mist heads or drip irrigation tubing.
- Irrigation to be coordinated with General Contractor to locate the necessary PVC sleeving to complete irrigation program.
- All lawn areas shall be spray head irrigated. The heads shall be located for head to head coverage with absolutely no over spray onto the pavement.
- All trees, shrubs and ground cover shall be drip irrigated / irrigated with shrub mist heads.
- The irrigation layout and all of the components shall conform to the specifications. The specifications call for shop drawings to be submitted for approval, as well as conformance to the materials specified.
- The Contractor shall be extremely careful during the installation process not to disturb new or existing plant materials. The Contractor is to coordinate his work with other sub-contractors. Sleeving under pavements must be available and in the proper location prior to paving.
- The irrigation Contractor shall conform to any local codes or ordinances that may be required to complete the work.
- This irrigation alternate shall include the cost of connecting to either the building water mains down stream of the back flow preventer of the irrigation well.
- The irrigation Contractor shall test water source for water quality including minerals that may cause staining of concrete and granite pavement and curbs.
- Irrigation Contractor shall coordinate with the Town of Groton for irrigation requirements prior to shop drawing preparation.



0 40' 80'
SCALE: 1"=80'



LANDSCAPE ARCHITECT				DRAWING TITLE			
WILLIAM FLEMING ASSOCIATES INCORPORATED				LANDSCAPE PLAN			
LANDSCAPE ARCHITECTURE PLANNING				PROJECT			
375 MAIN ST. SUITE 403 SPRINGFIELD, MA 01103 T 413 438-3006 F 413 438-3611 E wfa@williamfleming.com				THE VILLAGE AT SHEPLEY HILL GROTON, MASSACHUSETTS			
				CLIENT			
				SHEPLEY HILL CAPITAL PARTNERS LLC			
				SCALE: 1" = 80'			
				DATE: NOV. 20, 2020			
				DRAWN BY: WFA			
				DESIGNED BY: WFA			
				CHECKED BY: WFA			
				APPROVED BY: WFA			
				SHEET NO. 2044			
				PROJECT NO.			
				L-1			



LANDSCAPE ARCHITECT				DRAWING TITLE				LANDSCAPE DETAILS				SCALE: 1" = 80'				L-2							
<div><div><div><div>W</div><div>F</div></div><div><div>A</div><div>S</div></div></div><div>WILLIAM FLEMING ASSOCIATES INCORPORATED</div></div>				PROJECT				THE VILLAGE AT SHEPLEY HILL GROTON, MASSACHUSETTS				DATE: NOV. 20, 2020											
LANDSCAPE ARCHITECTURE PLANNING				CLIENT				SHEPLEY HILL CAPITAL PARTNERS LLC				DRAWN BY: WFA											
375 MAIN ST. SUITE #3 STONEHAM, MA. 02180 T 781 438 3088 F 781 438 3011 E wfleming@williamfleming.com												DESIGNED BY: WFA											
				1.				11/30/20				ISSUED FOR REVIEW				WFF				WFF			
				REV.				DATE				DESCRIPTION				BY				APP.			